

Generalized ground-water-flow pattern in the Columbia Plateau aquifer system

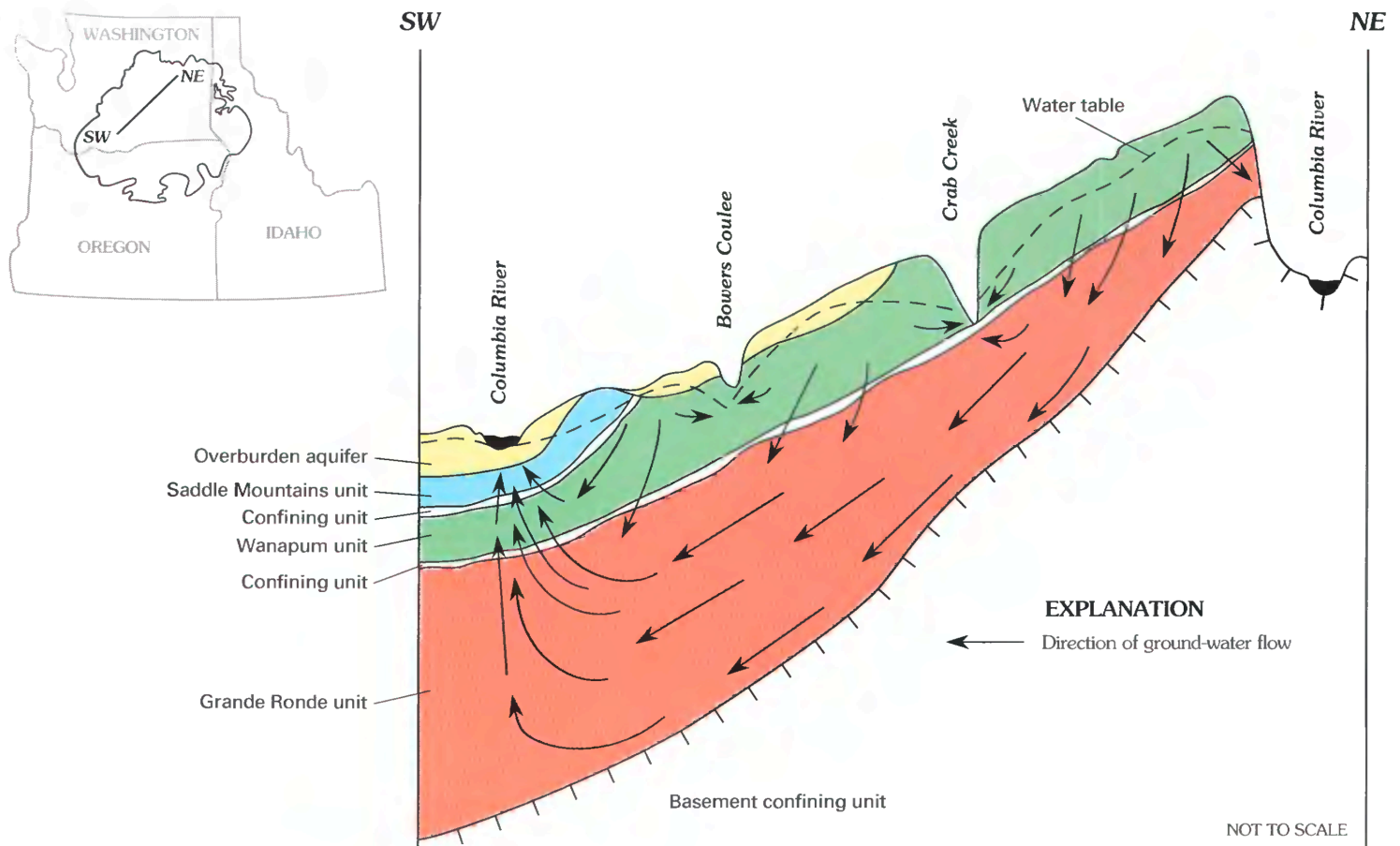


FIGURE 21.—Generalized ground-water-flow pattern in the Columbia Plateau aquifer system.

Source: Whiteman, K. J.; Vaccaro, J. J.; Gonthier, J. B.; Bauer, H. H.,
 The hydrogeologic framework and geochemistry of the Columbia Plateau
 Aquifer System, Washington, Oregon, and Idaho,
 U.S. Geological Survey Professional Paper No. 1413-B (1994):

Link to paper: <http://pubs.er.usgs.gov/usgspubs/pp/pp1413B>